



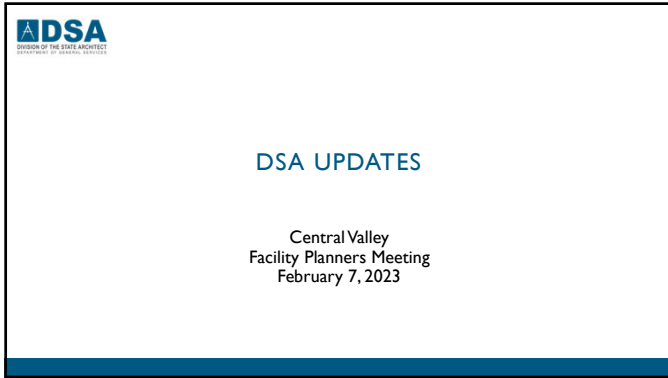
1



2



3

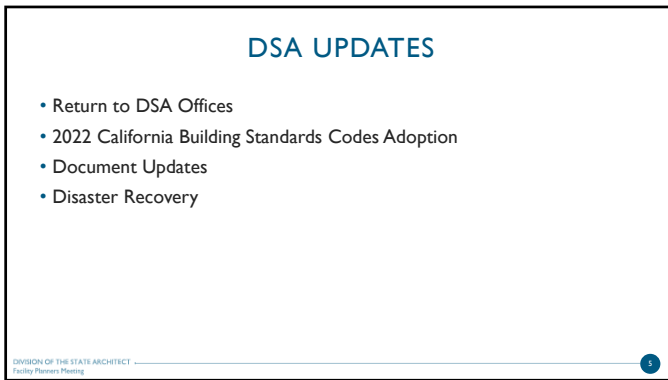


DSA
DIVISION OF THE STATE ARCHITECT

DSA UPDATES

Central Valley
Facility Planners Meeting
February 7, 2023

4




DSA UPDATES

- Return to DSA Offices
- 2022 California Building Standards Codes Adoption
- Document Updates
- Disaster Recovery

DIVISION OF THE STATE ARCHITECT
Facility Planners Meeting

5



RETURN TO DSA OFFICES

- As of 9/6/2022 DSA staff has returned to all offices
 - ✓ In-Office: Tuesday, Wednesday and Thursday
 - ✓ Telework: Monday and Friday

DIVISION OF THE STATE ARCHITECT
Facility Planners Meeting

6

IN-PERSON MEETINGS

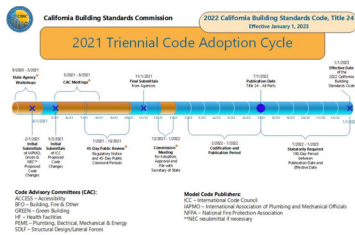
- Pre-application - As your group gets closer to submitting to DSA, please take advantage of a pre-application meeting. You would be meeting with supervisors of all DSA disciplines. There are many times that issues are raised in these meetings that left unattended could pose as stumbling blocks during the plan review phase. The meetings are at no cost to the design/district team and can be held in person at the DSA regional office or virtually via Microsoft Teams.
- Back Check
- Over-the-Counter plan review
- Advance notice is required for scheduling

DIVISION OF THE STATE ARCHITECT
 Facility Planner Meeting

7

7

2022 CALIFORNIA BUILDING STANDARDS CODES ADOPTION



DIVISION OF THE STATE ARCHITECT
 Facility Planner Meeting

8

8

2022 CALIFORNIA BUILDING STANDARDS CODES ADOPTION

- Projects initially submitted prior to January 1, 2023, remain under 2019 CBC for the duration of the project
- Projects initially submitted on or after January 1, 2023, are under the 2022 CBC
- Pre-Check (PC's) designs granted 6-month extension to comply with 2022 CBC: [Bulletin BU 22-01](#)
- We are utilizing staff overtime and contract consultants to work through this unprecedented volume however we will see 2 to 4 weeks of delay until we've worked through the backlog of projects.
- We are fielding many questions about the new requirements for solar energy and battery storage components that are required by the 2022 Code.

DIVISION OF THE STATE ARCHITECT
 Facility Planner Meeting

9

9



SOLAR REQUIREMENTS FOR 2022 CBC PROJECTS:

- This is applicable to new buildings only
- Not applicable to unconditioned space buildings
- Not applicable to relocation of existing buildings
- Not applicable to alteration projects
- Not applicable to additions

DIVISION OF THE STATE ARCHITECT
 Facility Planner Meeting

10

10

**SOLAR REQUIREMENTS FOR 2022 CBC PROJECTS
 EXCEPTIONS:**

- New buildings less than 1600sf regardless of climate zone
- New buildings 3100sf and less in climate zones 1,3,5,16
- New buildings 2400sf and less in climate zones 2,4,6-14
- Newly constructed temporary use buildings since those cannot be greater than 2100 sf and they are only on a site for 3 years or less (need to discuss if in climate zone 15)

DIVISION OF THE STATE ARCHITECT
 Facility Planner Meeting

11

11

DOCUMENT UPDATES

- Please make sure that you register your email address with our listserv to receive updated documents as they are posted.
- DSA 403-A: 2022 Energy Code – Certificates of Compliance Checklist This form was revised due to the 2022 California Energy Code. (1/2/23/22)
- DSA 403-B: 2022 Energy Code – Certificates of Compliance Checklist This form was revised due to the 2022 California Energy Code. (1/2/23/22)
- DSA 787: Disability Access and Education Fund Annual Report (HTML) The form DSA 787 underwent revisions to reflect the recent passage of Assembly Bill 2164 and to make the online submission process more efficient and user friendly. (1/2/29/22)
- IR PC-2: Pre-Check (PC) Design Criteria for Modular Buildings: 2022 CBC This publication clarifies the design criteria for new modular buildings submitted under the 2022 CBC. A modular building is defined as any building primarily constructed with modules that may be assembled onsite or in-plant, has a permanent foundation, may have an integral floor structure, and shall not be moved after initial installation without DSA review and approval. (1/2/05/22)
- IR PC-5: Pre-Check (PC) Design Criteria for Precast Concrete Buildings: 2022 CBC This publication clarifies the design criteria for precast concrete buildings utilizing concrete wall panels under the 2022 CBC. This document does not address modular buildings, relocatable buildings, nor modular elevator towers. (1/2/06/22)
- IR PC-6: Pre-Check (PC) Design Criteria for Relocatable Buildings: 2022 CBC This publication clarifies the design criteria for new relocatable buildings submitted under the 2022 CBC. A relocatable building is any building with an integral floor structure that is capable of being readily moved. (1/2/05/22) IR PC-7: Pre-Check Design Criteria for Steel Cantilevered Canopy Structures

DIVISION OF THE STATE ARCHITECT
 Facility Planner Meeting

12

12

DISASTER RESPONSE

- Humboldt County Earthquakes: December 20, 2022 – 6.4 magnitude followed by a 5.4 magnitude quake on New Year's Day, DSA sent Safety Assessment Program (SAP) evaluators to determine the safety of facilities on several public school campuses. All DSA technical staff – licensed architects and structural engineers – are trained and certified in the SAP program
- Atmospheric Rivers: 3-weeks of heavy rain and high winds in early January. Many campuses experienced wind and water damage. DSA partners with the Governor's Office of Emergency Services, CDE, School Districts and Design Professionals to aid in temporary housing and recovery efforts
- IR A- I: Approval for Temporary Use of DSA Approved Relocatable Classrooms. This IR allows for the rapid deployment of relocatable buildings to house students during recovery and rebuilding efforts.

DIVISION OF THE STATE ARCHITECT
 Facility Planner Meeting

13

13



THANK YOU

Harlan Reymont, AIA
 Principal Architect – Regional Manager
 DSA-Sacramento
 Harlan.Reymont@DGS.CA.GOV

www.dgs.ca.gov/dsa



14

14



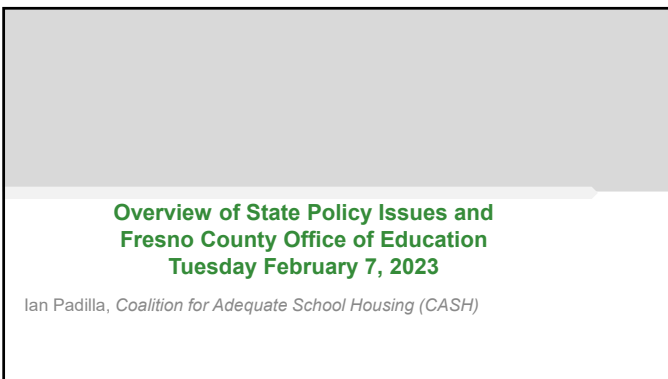
15



16



17



18

OVERVIEW

Legislative Landscape

- Large class of new legislators
- Committees and leadership
- Swing space

State Budget Overview

- \$223.6 General Fund
- Forecasted \$22.5 billion shortfall
- "Solutions": Delays, reductions, shifts and borrowing

19

OVERVIEW (CONT.)

K-12 funding:

- \$108.8 to Proposition 98
- \$23,732 per pupil
- LCFF COLA: 8.13%

LAO

- Reduce or pause prior year commitments if not expanded
- Identify an additional \$6 billion in reductions and delays beyond the Governor's \$14 billion
- Advise against new spending or multi-year deficits
- Legislature can choose ways to make reductions

20

SCHOOL FACILITY PROGRAMS AND FUNDING

School Facility Program (SFP)

- \$4.2 billion committed in prior budgets
- Governor proposes to cut \$100 million from FY 23-24 (from \$2.1 to \$2.0)

Transitional Kindergarten (TK) Funding

- Governor proposes to delay \$550 million GF by one year (FY 23-24 to FY 24-25)
- Upholds operational commitment to full TK implementation by 2025-26

21

STATE SCHOOL BOND

- AB 247 (Muratsuchi) – K-14 2024 State Bond
- Assemblymembers Al Muratsuchi, Mike Fong, and Lori Wilson
 - Dollar amounts TBD
 - Back-to-basics
 - SB 28 (Glazer) – K-University School Bond

22

STATE FACILITIES CLIMATE GOALS AND SCHOOL

- Legislation
- Water Quality – AB 249 (Holden)/Lead Testing
 - Disaster Preparedness – Mandatory Temperature Range/Schools as Cooling Centers
 - Security – Interior Door Locks/School Safety Plans/Technology
 - Managing Toxics: UST reauthorization

- State Programs and Regulatory Issues
- Inspections: Facility Inspection Tool (FIT)/AB 599
 - Air Quality: CalSHAPE
 - Energy Efficiency and storage: California Energy Code/DSA

23

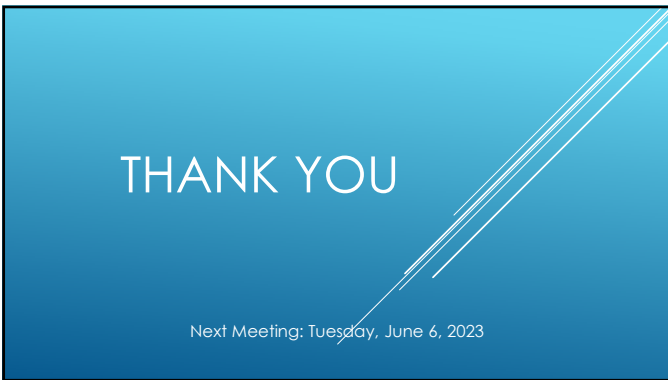
Questions & Answers

Ian Padilla, Legislative Advocate
 Coalition for Adequate School Housing (CASH)
ipadilla@m-w-h.com

24



25



26
