



2024-2025

Annual Education Report

Supporting Student Success

www.fcoe.org



Dear Partners,

As we share our 2024-2025 Annual Report, I'm proud to highlight the work and progress made this year at the Fresno County Superintendent of Schools. This report outlines how we've supported students, families, and schools across Fresno County and details the steps we're taking to ensure every student has access to quality education and the resources they need to succeed.

Our mission at FCSS is to provide educational leadership, build partnerships, and coordinate services so that all students have equitable opportunities to succeed. We work closely with school districts, educators, families, and community organizations to help ensure every child in Fresno County has access to a solid educational foundation, no matter their background or circumstances.



As an education community, we have faced several challenges over the past year. Many of our students and families continue to feel the effects of poverty and the lasting impacts of the pandemic. Schools are also navigating budget pressures, staffing shortages. Concerns around federal funding, as well as circumstances that can cause fear or instability for some families, have made planning more difficult for districts. Despite these challenges, I believe there is great hope in the dedication, creativity, and determination of our staff and community.

Even with these challenges, this year has been filled with significant accomplishments that reflect the hard work and commitment of the entire FCSS team and our partners across the county. Here are just a few of the things we've accomplished together this year:

- We hired 375 new employees across FCSS and celebrated 114 promotions, reinforcing the teams who support students every day.
- Our Safe and Healthy Kids Department secured \$15 million in new funding for Community Schools, bringing services such as academic support, mental health care, and family engagement to four new districts and twelve new sites.
- FCSS developed tools that are being used statewide and gaining national attention to support Community Schools, and we host California's largest Community of Practice, with over 100 educators and partners.
- Nearly 2,000 adults and 250 students participated in our Building Better Leaders workshop series.
- We launched the Safe School Ambassadors program in four districts, equipping students to stand up against bullying and create more inclusive school communities.
- Our All 4 Youth program served nearly 4,800 students and opened seven new wellness centers, providing safe spaces for mental health support.

- All 4 Youth secured a new five-year, \$140 million agreement to continue to provide mental health services for students across Fresno County.
- Safe and Healthy Kids together with our Foster and Homeless Youth Education Services received the Golden Bell Award for their Gallup Strengths Leadership Academy, empowering foster and homeless youth to build confidence and leadership skills.
- We reinstated our countywide Support Staff Conference after eight years with over 200 participants.
- Our Continuous Improvement team led 40 projects across 31 districts, helping one district improve EL learner outcomes and another significantly reduce middle school suspensions.
- FCSS's Data and Assessment team supported 23 internal projects across 16 departments and helped more than 450 students exit English Learner status, unlocking access to dual enrollment, career pathways, and STEM opportunities.
- Special Education launched a visual and performing arts program for students with significant disabilities, reduced chronic absenteeism from over 81% to under 50%, and supported a major increase in English Learner reading scores.
- We coached nearly 500 new teachers through induction and expanded our teacher residency program to five additional districts.
- Our Information System & Technology team hosted a sold-out Everest user conference, implemented a disaster recovery plan, modernized systems, and launched a student apprentice program to bring real-world tech experience to students.

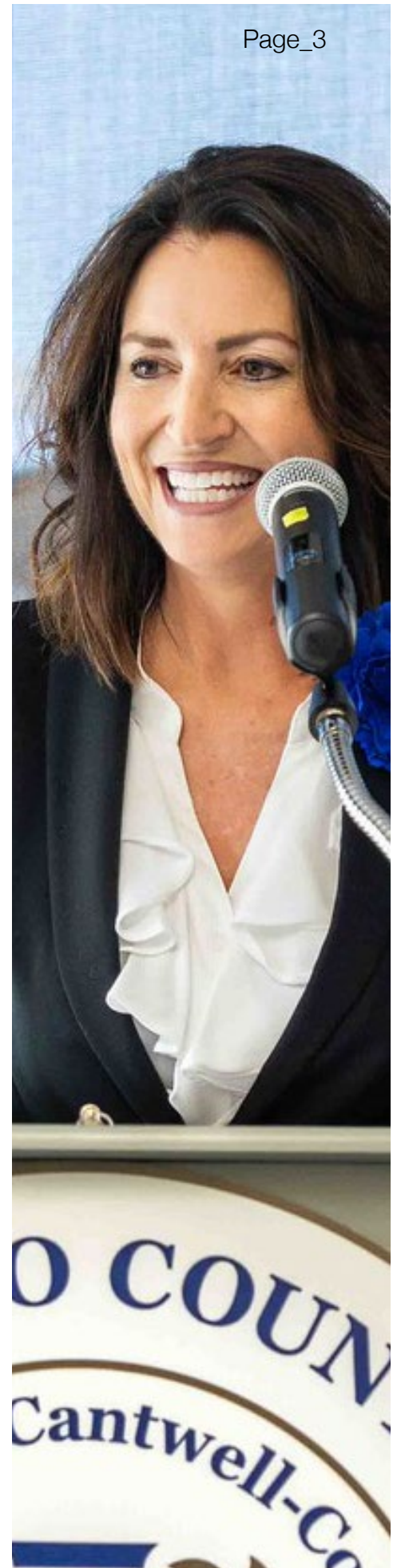
These accomplishments reflect the tireless dedication of our staff, partners, and community members. They represent the heart of what FCSS is all about, providing leadership, fostering partnerships, and coordinating the services that help every child thrive.

Thank you for your support and belief in educational opportunity. Together, we are changing lives, one student at a time.

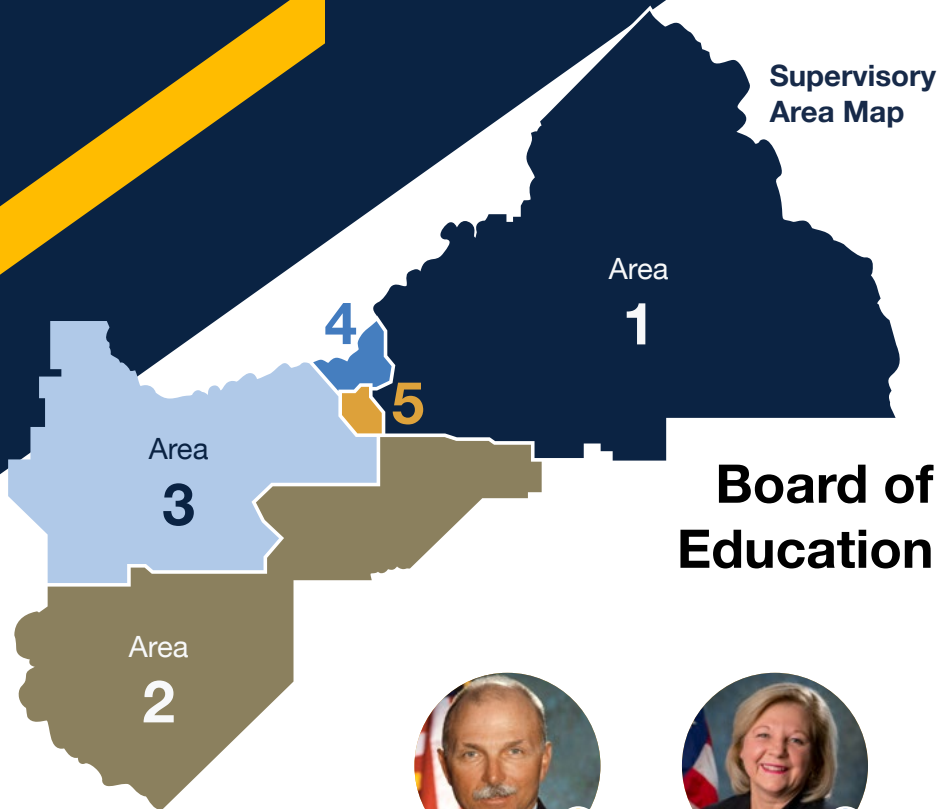
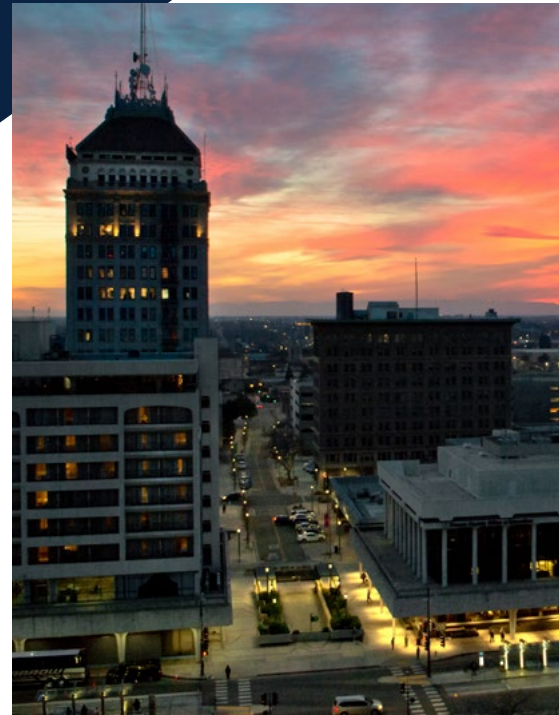
In service to the students of Fresno County,



Dr. Michele Cantwell-Copher
Fresno County Superintendent of Schools



Fresno County Board of Education and Superintendent's Cabinet

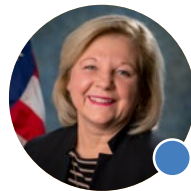


Board of Education

The Fresno County Board of Education (County Board) is comprised of five elected members who play a critical role in supporting the county's educational system. In collaboration with the Fresno County Superintendent of Schools, the County Board ensures that school facilities and learning environments promote growth and achievement for students in county programs. Key responsibilities include setting the County Superintendent's salary, approving the superintendent's budgets, and overseeing the Local Control Accountability Plan for juvenile court schools. Additionally, the County Board serves as an important forum for appeals related to inter-district transfers, expulsions, and charter school petitions, carefully considering each matter in accordance with the law to best serve the students, schools, and community of Fresno County.



Dr. Allen Clyde
President
Trustee Area 5



Dr. Marcy Masumoto
Vice President
Trustee Area 4



Kimberly Tapscott-Munson
Trustee Area 1



Itzi Robles
Trustee Area 3



Bryan Burton
Trustee Area 2



Superintendent's Cabinet

The Fresno County Superintendent's Cabinet provides leadership and strategic direction for the Office of the Fresno County Superintendent of Schools. Cabinet members oversee the key operational, instructional, and student-support functions of the organization, ensuring programs and services align with the county's educational goals. Together, they guide initiatives, manage resources, support staff, and foster partnerships that enhance student learning and community engagement across Fresno County.



Anthony Ayerza Jr.
Executive Director
CTE/ROP



Jeff Becker
Executive Director
Facilities & Operations



Christina Borges
Executive Director
Student Services



Trina Frazier
Assistant Superintendent
Student Services



Dr. Corey Greenlaw
Assistant Superintendent
Innovation & Support



Dr. Allison Hernandez
Executive Director
Curriculum & Instruction



Dr. Diane Lira
Deputy Superintendent
Instructional Division



Kevin Otto
Deputy Superintendent
Business Services



Tannon Pafford
Assistant Superintendent
Human Resources



Jason Parkin
General Counsel
Legal Services Division



Mike Provonost
Technology Officer
Information Systems &
Technology



Dr. Annie Sharp
Executive Director
System Innovation &
Improvement



Helena Silva
Executive Director
Safe & Healthy Kids



Dr. Matilda Soria
Executive Director
Child & Family Success



Teresa Martinez-Trevino
Executive Assistant



**Fresno County
Superintendent of Schools**

Dr. Michele Cantwell-Copher, Superintendent

Fresno County

by the numbers

The rich diversity of Fresno County is on full display in the demographics of our students.



Total Students Enrolled (K-12)

206,465

The student population of Fresno County increased by about 0.23% from the previous year.

Total Student Enrollment

Four-Year Cohort

There are 16,569 Cohort students; they have a graduation rate of: **86.2%**

Issues Facing the Students of Fresno County

Socioeconomically Disadvantaged



Free/Reduced Lunch



English Learners



Homeless & Foster



Those with Disabilities



0 25 50 75 100

31 Districts

Big Creek Elementary	21
Pine Ridge Elementary	67
Burrell Union Elementary	94
Westside Elementary	135
Clay Joint Elementary	246
Raisin City Elementary	255
Orange Center Elementary	261
West Park Elementary	286
Pacific Union Elementary	328
Washington Colony Elementary	414
Laton Joint Unified	603
Fresno County Office of Ed.	735
Kingsburg Joint Union High	1,199
Sierra Unified	1,251
Golden Plains Unified	1,352
Riverdale Joint Unified	1,426
Caruthers Unified	1,659
Firebaugh-Las Deltas Unified	2,232
Washington Unified	2,340
Fowler Unified	2,563
Parlier Unified	3,206
Mendota Unified	3,977
Coalinga-Huron Unified	4,418
Kerman Unified	5,273
Selma Unified	5,914
Kings Canyon Joint Unified	9,299
Sanger Unified	12,101
Central Unified	15,962
Clovis Unified	42,872
Fresno Unified	67,819



Types of Schools in Fresno County

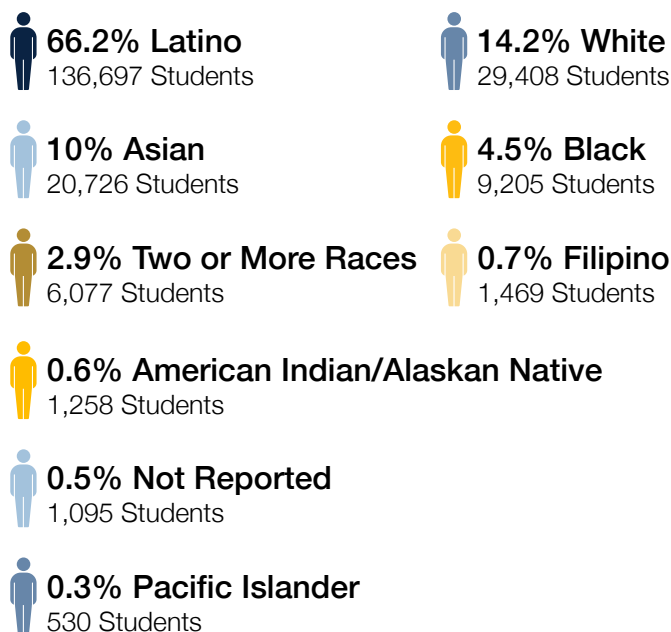
Traditional Elementary	191
Traditional Middle	40
Traditional High School (non-charter)	36
Alternative/Continuation	35
Special Education	5
K-12 (non-charter)	12

Charter Schools

Island Community Day*	2
Hume Lake	45
Central Valley Home*	119
Kings Canyon Online	142
West Park Charter Academy	165
Alvina Elementary	269
Roosevelt Elementary*	186
School of Unlimited Learning	199
Aspen Ridge Public	246
Reedley Middle College High	255
Amb. Phillip V. Sanchez II Public	261
Washington Elementary*	285
W.E.B. DuBois Public	268
Hallmark Academy	287
Career Technical Education Center	289
Aspen Meadow Public	301
Kepler Neighborhood School	301
Morris E. Dailey Elementary	312
Clovis Global Academy	317
Aspen Valley Prep Academy	320
Endeavor Charter	333
Sierra Charter	354
Carter G. Woodson Public	364
Edison-Bethune Academy	368
Golden Charter Academy	405
Lincoln Elementary*	442
Rafer Johnson Junior High*	447
University High	498
Big Picture Educational Academy	520
Quail Lake Environmental	603
Sanger Academy	609
Ronald W. Reagan Elementary*	619
Clovis Online	797
Crescent View South II	1,260
California Virtual Academy - Fresno	1,504
Crescent View West Public	1,703
Yosemite Valley	3,065

* part of Kingsburg Elementary Charter

Student Ethnicity



Data Source: California Department of Education DataQuest

FCSS Locations

Every FCSS campus is a place where transformation happens every day. Each campus is more than a place of learning. They are environments where students are supported, guided, and given the opportunity to succeed. From individualized instruction to meaningful community partnerships, each site meets students where they are and helps them move forward. This collective effort ensures every student has the tools, support, and encouragement needed to grow, build confidence, and envision a positive future.



SCOUT ISLAND OUTDOOR EDUCATION CENTER

7695 N Van Ness Boulevard, Fresno, CA 93711

Scout Island provides hands-on environmental education for students along the San Joaquin River in Fresno. The center offers year-round field trips that explore local wildlife, ecology, geology, and cultural history while connecting learning to California Education Standards.

VIOLET HEINTZ EDUCATION ACADEMY

4939 E. Yale Avenue
Fresno, CA 93727

Violet Heintz serves Fresno County students who are expelled or probation-referred, providing individualized academic and behavioral support. Through partnerships with local agencies and mentoring programs, students develop the skills needed to transition back to their home schools or pursue college and careers.



CAREER TECHNICAL EDUCATION CHARTER

1320 N. Mariposa Street
Fresno, CA 93703

CTEC prepares students for college and careers through hands-on learning, leadership development, and collaboration. Project-Based Learning and dual-enrollment courses allow students to tackle real-world challenges while earning college credit and building skills for lifelong success.



ALICE M. WORSLEY COURT SCHOOL

3333 E. American Avenue
Fresno, CA 93725

Alice Worsley provides education for Fresno County youth in the custody of the Probation Department at the Juvenile Justice Campus. The school combines California State Standards aligned academics with social-emotional and behavioral support to help students continue their education and prepare for future careers.



BETH RAMACHER

710 N Hughes Avenue
Fresno, CA 93728

Beth Ramacher Educational Complex provides specialized academic services to student with disabilities ages 3-22. The campus is home to multiple special education programs serving students with Autism, Extensive Support Needs, Deaf and Hard of Hearing, and Emotional Disability.



SUTHERLAND CENTER

14505 W F Street
Kerman, CA 93630

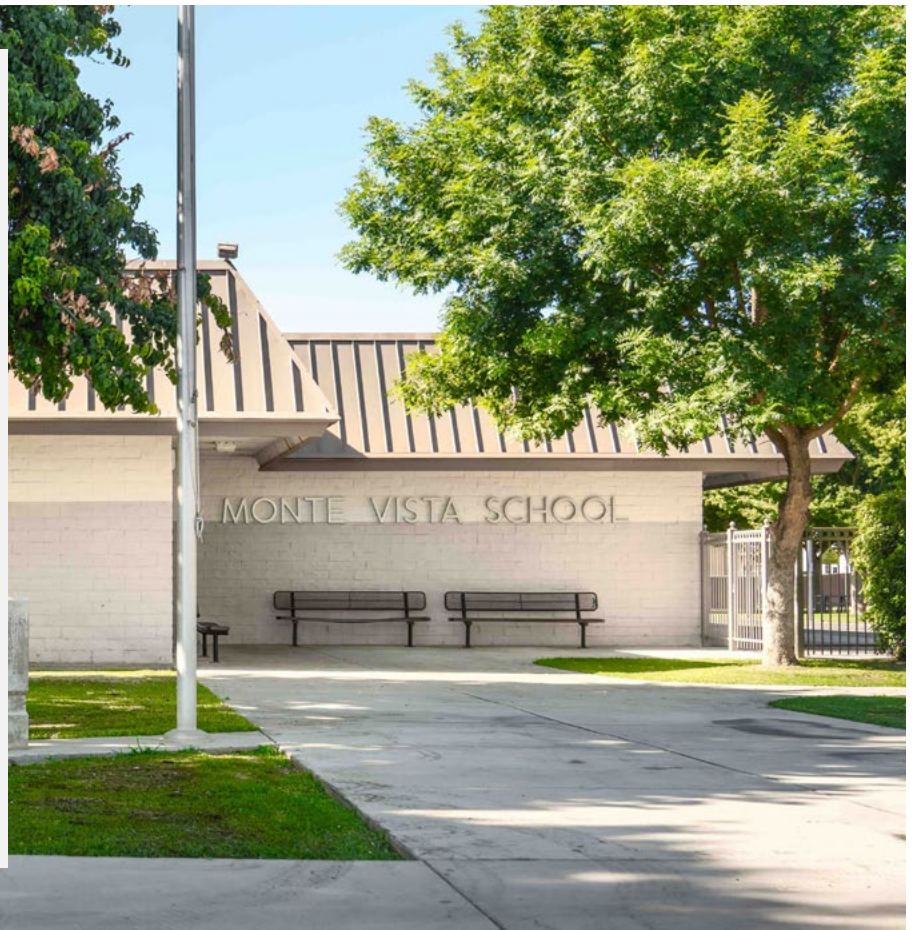
Sutherland Center in Kerman serves students ages 3–22 with extensive support needs, offering a continuum of specialized services throughout western Fresno County. Its program extends beyond the main campus through satellite classrooms in Kerman and Mendota, ensuring students receive individualized support within their local communities.



MONTE VISTA SCHOOL

1221 E Duff Avenue
Reedley, CA 93654

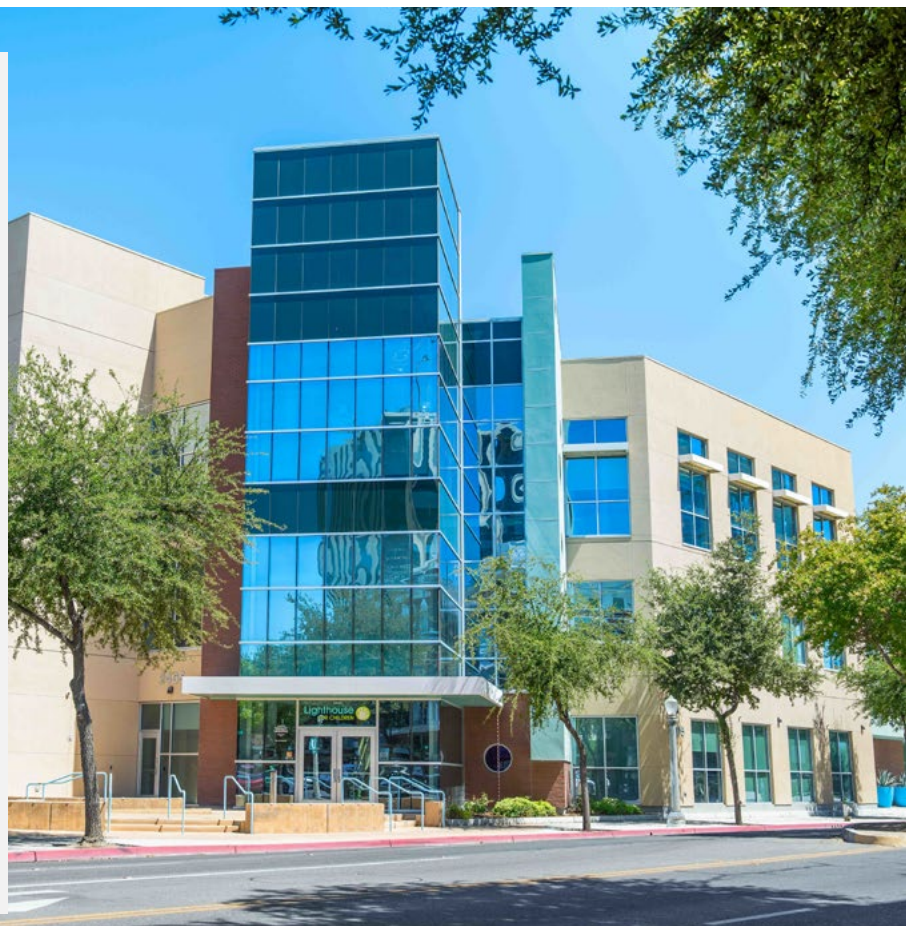
The Extensive Support Needs (ESN) Monte Vista School is designed to meet the individualized functional and educational needs of students whose disabling conditions are within the moderate to severe range of intellectual disability. The program aims to empower students to reach their full potential, gain independence, and become active participants in their communities.



THE LIGHTHOUSE FOR CHILDREN

2405 Tulare Street
Fresno, CA 93721

The Lighthouse is a community hub in downtown Fresno that supports children ages 0–5 and their families with high-quality early learning, developmental resources, and family support. The center offers childcare, community education, health programs, and initiatives like Dolly Parton’s Imagination Library to promote school readiness, healthy growth, and positive family engagement.





Team FCSS

2024-2025 Statistics



1,477 Total Employees



52 Departments



Classifications of Employees



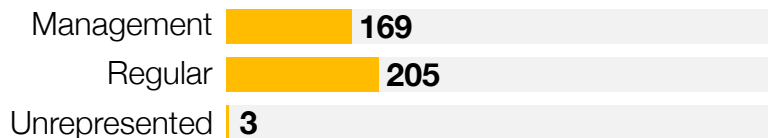
- 821 Classified
- 205 Certificated
- 214 Management
- 237 SCCU

At the heart of our work is TEAM FCSS. Across Fresno County, our staff bring expertise, dedication, and a commitment to supporting students, families, and school districts every day. From educators and specialists to operational and support teams, each member of TEAM FCSS plays a vital role in ensuring schools have what they need to serve students well. While much of this work happens behind the scenes, the impact is felt in classrooms, campuses, and communities throughout the county.

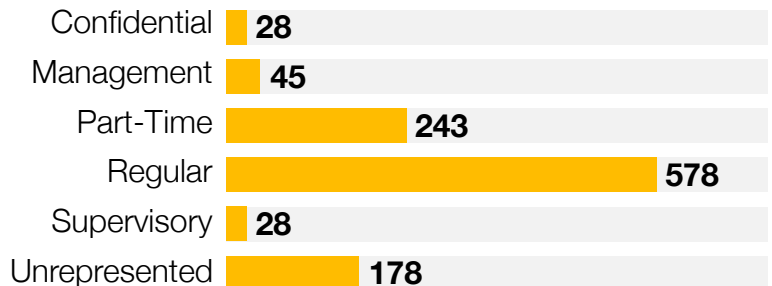
Together, TEAM FCSS represents a culture of service, collaboration, and continuous improvement. They are the foundation of our work and the driving force behind the progress reflected throughout this report.

Report Code

Certificated



Classified



Retirees

- | | |
|-----------------------|----------------------|
| Remedios Arellano | Nancy Klassen |
| Kathryn Bartels | Lynn Krikorian |
| Darla Beeson | Erlinda Legare |
| Allen Burnett | Belia Martinez-Lopez |
| Ruben Castillo | Maria McGraw |
| Leslie Coffman | Sandra Minter |
| Leslie Cox | Sevia Robertson |
| Maria De Lourdes Diaz | Guadalupe Robledo |
| Donna Ellis | Phoukam Sinpraseuth |
| Laurie Gabriel | David Tenney |
| Sandra Garcia | Julianna Van Dam |
| Linda Gonzalez | Karen West |

On behalf of FCSS, heartfelt congratulations and deepest gratitude are extended to the 2025 retirees. Their dedication and contributions have left a lasting impact on the lives of students, colleagues, and the entire Fresno County education community. As they embark on this exciting new chapter, their legacy of service will continue to inspire others. FCSS thanks them for their many years of hard work and commitment to education, and congratulates them on a well-deserved retirement.

Actual Retirement Contributions for Employees

\$8,969,552

Salary and Benefits Actual Expenses

\$163,087,350

Employee Recognition

July 2024 - June 2025

Pillar Award Recipients

The Pillar Awards recognize individuals who reflect what matters most at FCSS and in the way we serve Fresno County. These recipients represent the heart of TEAM FCSS. They lead through their actions and show a genuine commitment to supporting students, families, and our district partners. Their impact is not defined by a single moment, but by the consistent, everyday ways they show up. We are proud to recognize this year's Pillar Award recipients for the meaningful difference they make across Fresno County.



Jaz Perkins

Employee of the Year



Maritza Ceballos

Teacher of the Year



Rhonda Lodridge

Administrator of the Year

Employees of the Month

The Employee of the Month recognition highlights members of TEAM FCSS who go above and beyond in their work each day. Each employee is recognized at the Fresno County Board of Education meeting, where their contributions are acknowledged and celebrated. They lead by example and make a meaningful difference through their commitment to supporting students, colleagues, and our district partners.



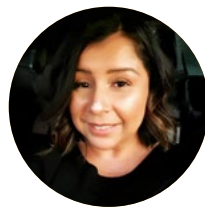
Jaz Perkins

July 2024



Javier Quintana

August 2024



Nellie Garza-Castillo

September 2024



Crystal Johnson

October 2024



Arnesia Williams

November 2024



Rachel Miller

December 2024



Marisa Gamboa

January 2025



Anthony Stoner

February 2025



Laura Arambula-Morelos

March 2025



Jennifer Callahan

April 2025



Lindsey Camacho

May 2025



Paul Gong

June 2025

THE FOUNDATION @ FCOE



Board of Directors

R. Michael Alexander
JD Davis
Jagdip Dhanda
Gabriel Dillard
Elizabeth Dooley
Jose A. Elgorriaga
Armida Espinoza
Sally Gallagher
Thilani Grubel
Mendy Laval
Dr. Marcy Masumoto
Yery Olivares
Kevin Otto
Artie Padilla
Gursharan Rahal
Lorenzo Rios
Virginia Madrid-Salazar
Jennifer Smith
Raye Michelle Vang
Tyrone Roderick Williams
Tom Zimmerman

Executive Committee

Debbie Jacobsen
President

Al Galvez
Vice President

NeFesha Ruth Yisra'el
Treasurer

Courtney Shapiro
Secretary

Tracy Kashian
Director-At-Large

Anna Brooks
Immediate Past-President

Dr. Michele Cantwell-Copher
Superintendent of Schools

Dr. Diane Lira
Deputy Superintendent

MaryEllen Galvan
Executive Director

Mission Statement

The mission of The Foundation @ FCOE is to ensure students reach their full potential by supporting exemplary educational programs and services through a shared community responsibility.

2025 Highlights

Providing support for FCSS' academic student events continues to be a fundamental priority. These programs help develop critical thinking, leadership skills, reinforce classroom learning, and support positive social-emotional growth. Each year, Fresno County is proudly represented at local, state, national, and even international competitions by dedicated and ambitious students. In the 2024-25 school year, 11th grader Olaf Muchalski from Clovis West High School was named Sweepstakes Winner of the Fresno County Science Fair and advanced

to the International Science and Engineering Fair. Sanger Unified's Hallmark Academy earned the title of Overall Champion at the Academic Decathlon, while Clovis West took first place at the Mock Trial competition and teams from Granite Ridge Intermediate and Fugman Elementary in Clovis Unified qualified for the state MathCounts Competition. These accomplishments reflect the dedication and development of Fresno County students as they grow academically, socially, and personally through these enriching experiences.

\$1,080,042

Issued to FCSS Programs

\$537,050

Secured in Grant Funds

\$192,448

Student Event Sponsorship

\$556,649

Raised through Corporate Sponsorships

\$22,170

Raised by FCSS Employees



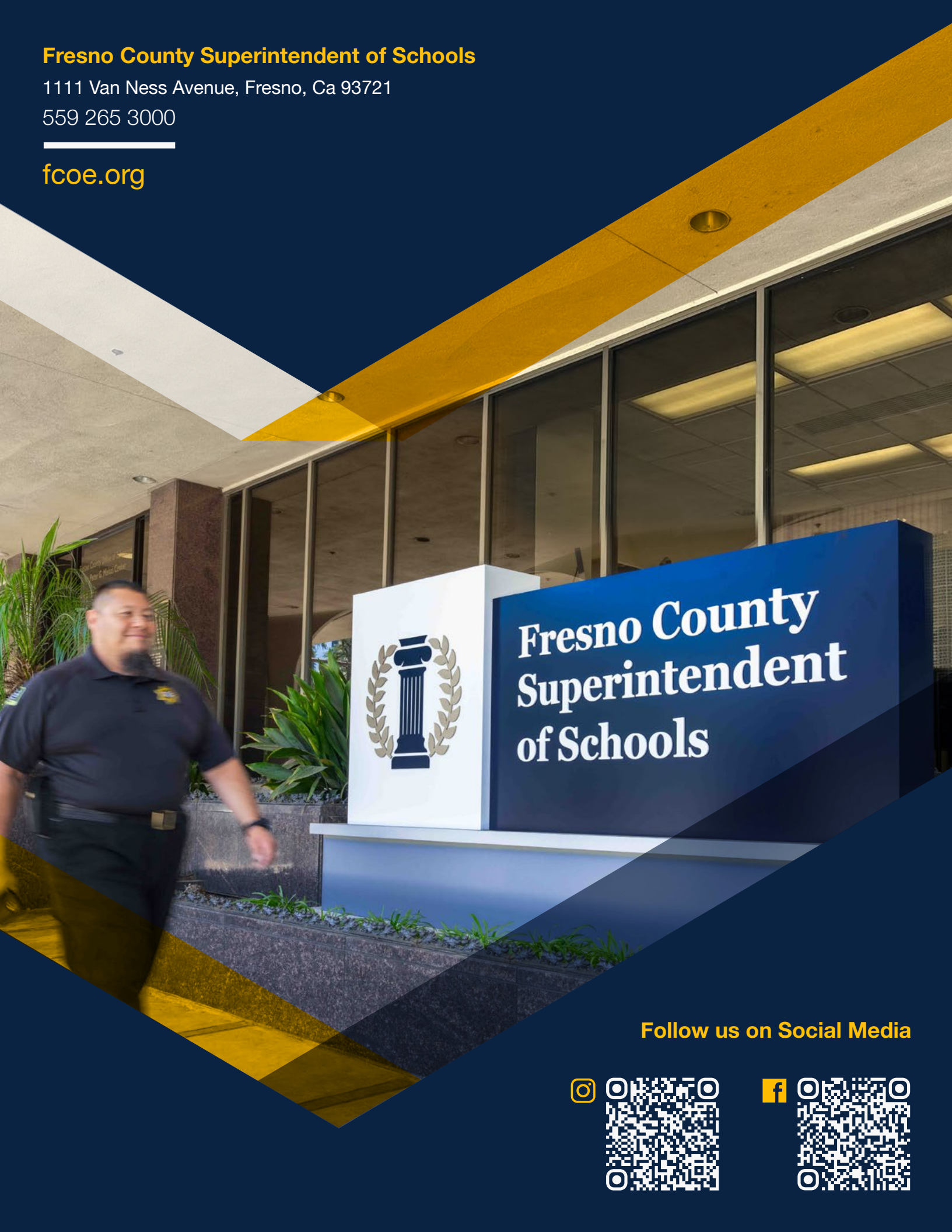
Every year, the Foundation hosts the FCOE Honors Gala to recognize four community members who have significantly impacted Fresno County students through their profession or community involvement. Proceeds from the Gala support academic events, special projects, and programs in academics, agriculture, the arts, and athletics for Fresno County students. Through these partnerships, FCSS enhances students' educational experiences, helping them develop talents, interests, and skills for a bright future.

Fresno County Superintendent of Schools

1111 Van Ness Avenue, Fresno, Ca 93721

559 265 3000

fcoe.org



Follow us on Social Media

